



**GRIPPLE®**

# Hong Kong and Macau Introduction Guide



Innovative wire rope hanger  
systems for the suspension of  
mechanical, electrical, plumbing,  
and HVAC services



# A new approach to MEP services installation

Gripple is the most lightweight, aesthetically pleasing, and cost effective hanging system for the suspension of mechanical, electrical, HVAC and plumbing services.



Mechanical



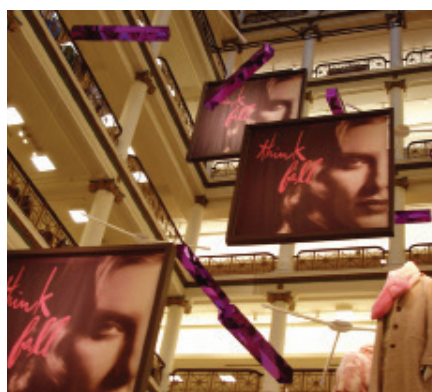
Electrical



HVAC



Catenaries



Signage and Shop Fitting



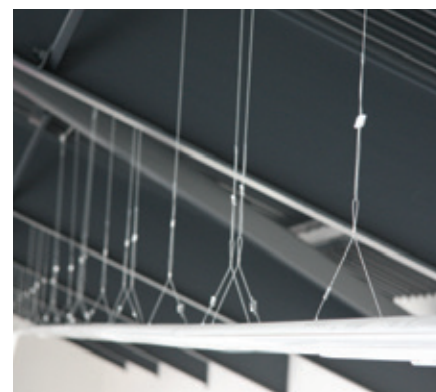
Cold Rooms



Food / Humid Environments



Seismic and Anti-Terrorism/  
Force Protection



Lighting

# High-profile and prestigious projects

Our products have been used on a number of high-profile and prestigious projects across the world:



Atlantis - UAE

- Wembley Stadium - UK
- Airbnb Headquarters - Ireland
- Centre Pompidou - France
- BMW, Audi, Daimler - Germany
- Stadio Juventus delle Alpi - Italy
- Airbus Madrid - Spain
- MGM City Center - USA
- Facebook, Google and Apple Data Centres - USA
- Melbourne Convention Centre - Australia
- Japan Railways - Japan
- Calgary Airport - Canada
- Boeing Hindon Airbase - India
- Atlantis the Palm Hotel & Resort, - UAE
- Kempinski Hotel, the Wave - Oman
- Doha Convention Centre and Tower - Qatar
- Scania - Brazil
- Hewlett Packard - Mexico
- Nestle factory - Chile
- Hard Rock Café - Colombia
- General Motors - Ecuador
- IKEA - Multiple sites worldwide



MGM City Center - USA



Centre Pompidou - France



# Discover Gripple for your next project

## **Saves time and reduces costs**

Up to six times faster to install than threaded rod and chain suspension systems

## **Environmentally friendly**

Steel consumption is reduced by up to 95%

## **Strong and versatile**

Available in 5 load rated sizes from 10kg to 325kg, with designated safe working loads

## **Supplied in ready-to-use kits**

No hot works required on-site, and lightweight so easier to handle, improving site safety

## **A third-party approved system**

Certification worldwide including Lloyds Register and UL

## **Technical support available**

For specification and installations

### **Place an order**

Please contact our distributor Delta Duct Systems Limited for commercial enquiries or to place an order.



### **Delta Duct Systems Limited**

4/F, Maxwell Industrial Building  
350 Kwun Tong Road  
Hong Kong

**Tel:** +852 2511 2118

**Fax:** +852 2507 5078

**Email:** sales@dpx.hk

### **Gripple Ltd (Headquarters)**

The Old West Gun Works  
Savile Street East  
Sheffield S4 7UQ  
UK

**T** | +44 (0) 800 018 4264

**F** | +44 (0)114 275 1155

**E** | info@gripple.com

### **Gripple Inc**

1611 Emily Lane  
Aurora  
IL 60502  
USA

**T** | +1 866 474 7753

**F** | +1 800 654 0689

**E** | usinfo@gripple.com

### **Gripple Europe SARL**

1, rue du commerce  
BP 37  
67211 Obernai Cedex  
France

**T** | +33 (0)3 88 95 44 95

**F** | +33 (0)3 88 95 08 78

**E** | frinfo@gripple.com

### **Gripple India**

B 95/2  
Naraina Industrial Area  
Phase I  
New Delhi-110028

**T** | +91 11-40582703

**F** | +91 11-40582703

**E** | ininfo@gripple.com

WE ARE SOCIAL  
FOLLOW OUR UPDATES

